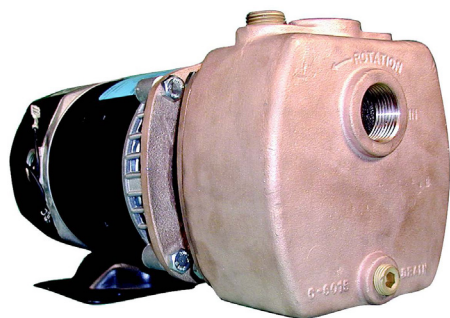




OBERDORFER®

An Ingersoll Rand Business

Model 300B Bronze Self-Priming Centrifugal Pump



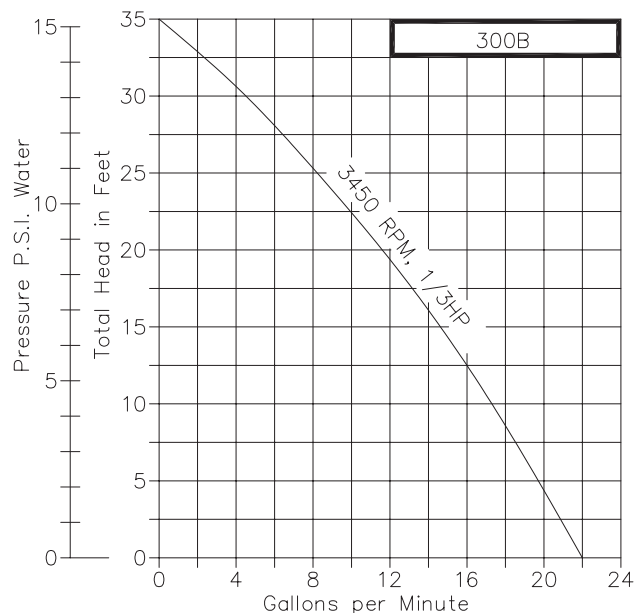
OB300B - Bronze with stainless steel shaft, Single Phase

OB300B-01 - Bronze with Monel shaft, Single Phase

Features

- Pipe Size: 1" NPT
- Self-Priming to 20 feet Suction Lift
- Rugged Bronze Construction
- Ideal for marine service (air conditioning, bilge, and sea water recirculating)
- O-Ring Housing seal eliminates gasket problems
- Auxiliary Connections - for convenient priming and draining
- Multiple Mechanical Shaft Seal Options for various applications
- Pump Heads mount to Standard Footed Nema 56J Jet Pump Motors
 - Shafts : 416 Stainless, Monel, or 316
 - Passivated Stainless
 - Multiple motor options including Explosion Proof
- For Pedestal Style, see 30PB
- Optional Lifting Handle

Performance Capacity Water at 60°F



Up to 22 gallons per minute water flow and suction lift of 15 feet without a foot or check valve (25 foot suction lift using a foot or check valve and a filled inlet line). A 1/2" pipe plug on the tank top is for initial filling of priming chamber and inlet line-pump priming is automatic thereafter. Pump seal is mechanical carbon face type mated to ceramic wear face for maximum durability. Other seal components are made of NBR with low swell characteristics for compatibility with a wide range of liquids including many chemicals and solvents. These pump models are widely used for the pumping of Perchloroethylene. Must be operated in the horizontal position (As shown in picture).

Seal Options

Note: Seal and shaft modifications below are not physically interchangeable. See parts table (rear).

FKM A Solvent Mechanical Seal: Mechanical seal for oils, fuels, lubricants, most mineral acids, and many solvents that attack other rubbers such as Carbon Tetrachloride, toluene, benzene, and xylene.

PTFE Mechanical Seal: For virtually all industrial chemicals, corrosives and solvents - as limited by compatibility of basic pump metal of construction.



OBERDORFER®

An Ingersoll Rand Business

Capacity - Water at 60°F

Pump Head	Seal Style	Seal Materials					Typical Applications
		Head			Seat		
	Type	Face	Case	Elastomer	Face	Elastomer	
OB300B-06	16 or 2100	Silicon Carbide	Passivated 316SS	NBR	Silicon Carbide	NBR	Ocean water with fine abrasives
OB300B	6A	Carbon	Passivated 316SS	NBR	Ceramic	NBR	Non-potable fresh water, salt water, ethylene glycol
OB300BS-10	6A	Carbon	18-8 SS	FKM	Ceramic	FKM	Solvents*
OB300BS-11	9A	Carbon	18-8 SS	PTFE	Ceramic	FKM	Industrial Chemicals*

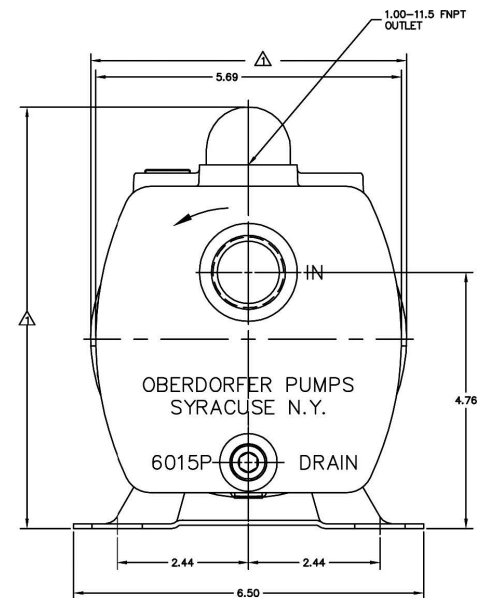
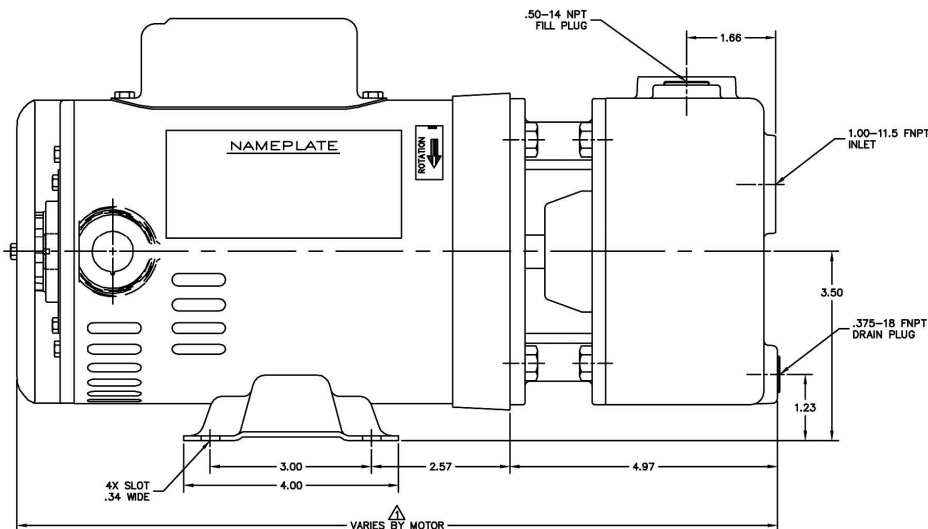
Notes: *Fluids compatibility suitable for use with bronze

Discharge Pressure		3450 RPM Suction Lift					
Feet	Equiv. PSI	0 ft.	5 ft.	10 ft.	15 ft.	20 ft.	
0	0.0	22	20	17	14	10	
5	2.2	20	17	14	10	5	
10	4.3	17	14	10	5		
15	6.5	14	0	5			
20	8.7	10	5				
25	10.8	5					
30	13.0	3					
35	15.2	1					

Dimensions

DIMENSIONS

⚠ DIMENSIONS VARY BY MOTOR.



Pump No.	HP	SF	Enclosure	Phase	Voltage	Shaft Construction	Motor P/N (Item 12)
OB300B-F13	1/3	1.75	ODP	Single	115	416 SST	OB5859
OB300B-01F26	1/3	1.75	ODP	Single	115/230	Monel	OB32273
OB300B-F17	1/3	1.75	ODP	Single	115/230	316 Passivated	OB3032
OB300B-F21	1/3	1.75	XP	Single	115/230	416 SST	OB8214
OB300BP01F65	1/3	1.75	ODP	Three	208-230/460	Monel	OB32355
OB300BP-F57	1/3	1.75	ODP	Three	208-230/460	416 SST	OB6996
OB300B-J20	1/2	1.65	TEFC	Single	115/230	416 SST	OB7976
OB300B-01J26	1/2	1.65	ODP	Single	115/230	Monel	OB32332
OB300B-J24	1/2	1.65	ODP	Single	115/230	316 Passivated	OB3031
OB300B-J89	1/2	1	TENV	DC	12V	416 SST	OB2386
OB300BP-M58	3/4	1.15	TEFC	Three	230/460	416 SST	OB7967

IR Ingersoll Rand.

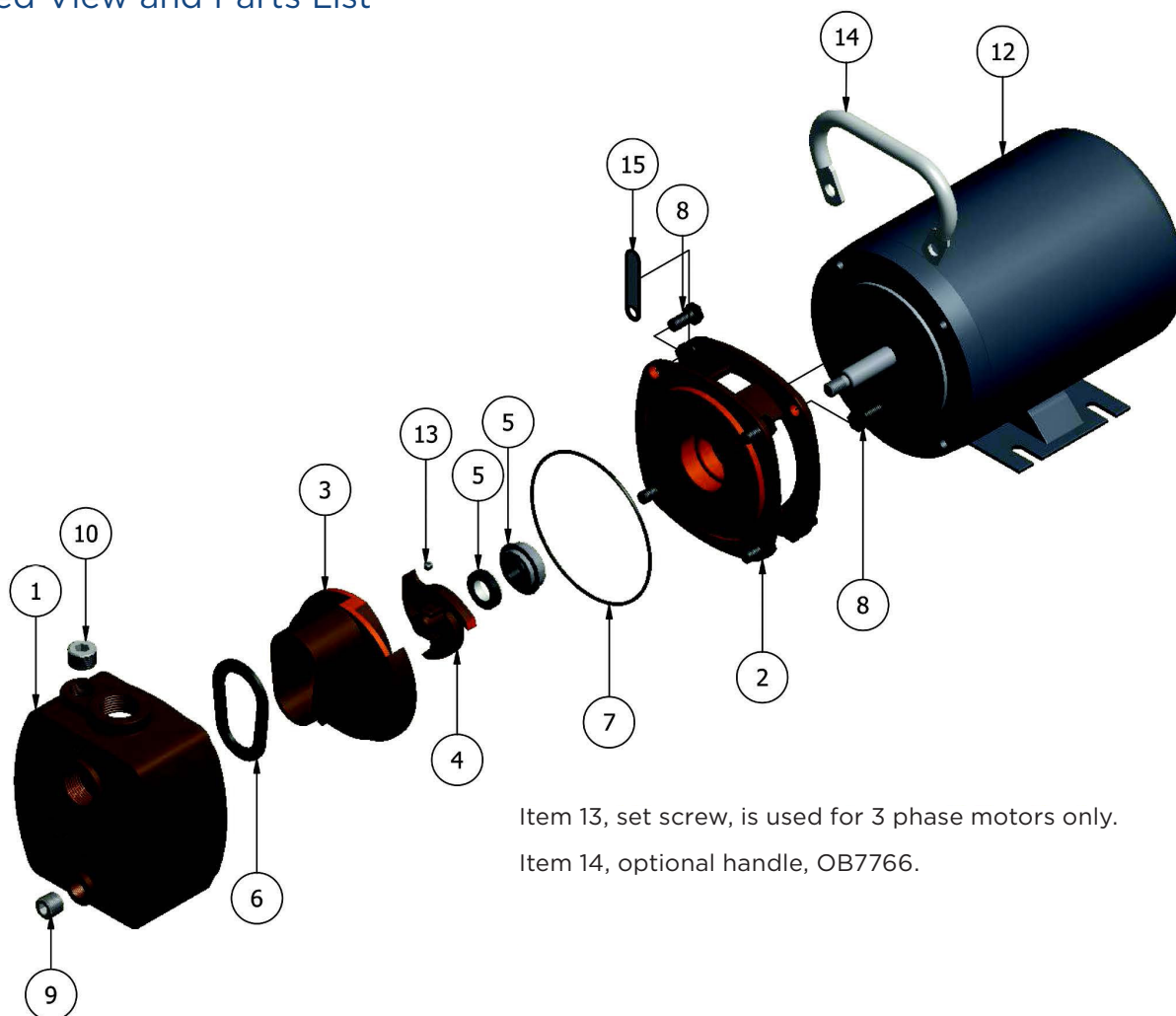
12500 South Pulaski Road
Alsip, IL 60803, USA
Phone (800) 448.1668



OBERDORFER®

An Ingersoll Rand Business

Exploded View and Parts List



Item 13, set screw, is used for 3 phase motors only.

Item 14, optional handle, OB7766.

	1	2	3	4	5	6	7	8	9	10	*11	12	13	14	15	Repair Kit
	Body	Adapter	Diffuser	Impeller	Seal Assembly	Diffuser Gasket	O-Ring	Screw	Plug	Plug	Shim	Motor	Set Screw	Handle (Optional)	Nameplate	
Pump No.	1 Req'd	1 Req'd	1 Req'd	1 Req'd	1 Req'd	1 Req'd	1 Req'd	8 Req'd	1 Req'd	1 Req'd	Varies	1 Req'd	1 Req'd	1 Req'd	1 Req'd	
OB300B	OB7190	OB7191	OB7192	OB7193	OB32155	OB6021-09	OB9797-157	OB5411	OB7321S	OB7443S	OB602501, 02 or 03	See Pump & Motor Options	NA		OB7783	OB10865
OB300B-06	OB7190	OB7191-1	OB7192	OB7193-1	OB33226	OB6021-09	OB9797-157	OB5411	OB7321S	OB7443S	OB602501, 02 or 03		NA		OB7783	OB10867
OB300BP	OB7190	OB7191	OB7192	OB7200	OB32155	OB6021-09	OB9797-157	OB5411	OB7321S	OB7443S	OB602501, 02 or 03		OB9849	OB7766	OB7783	OB10866
OB300BS-10	OB7190	OB7191	OB7192	OB7193	OB32210	OB2271	OB9797-157	OB5411	OB7321S	OB7443S	OB602501, 02 or 03		NA		OB7783	OB11290
OB300BS-11	OB7190	OB7314	OB7192	OB7193	OB32211	OB2271	OB93555-157S	OB5411	OB7321S	OB7443S	OB602501, 02 or 03		NA		OB7783	OB11604

* Repair kit contains items 4, 5, 6, 7, 11 & 13
*Item 11 is not depicted above

IR Ingersoll Rand.

12500 South Pulaski Road
Alsip, IL 60803, USA
Phone (800) 448.1668